

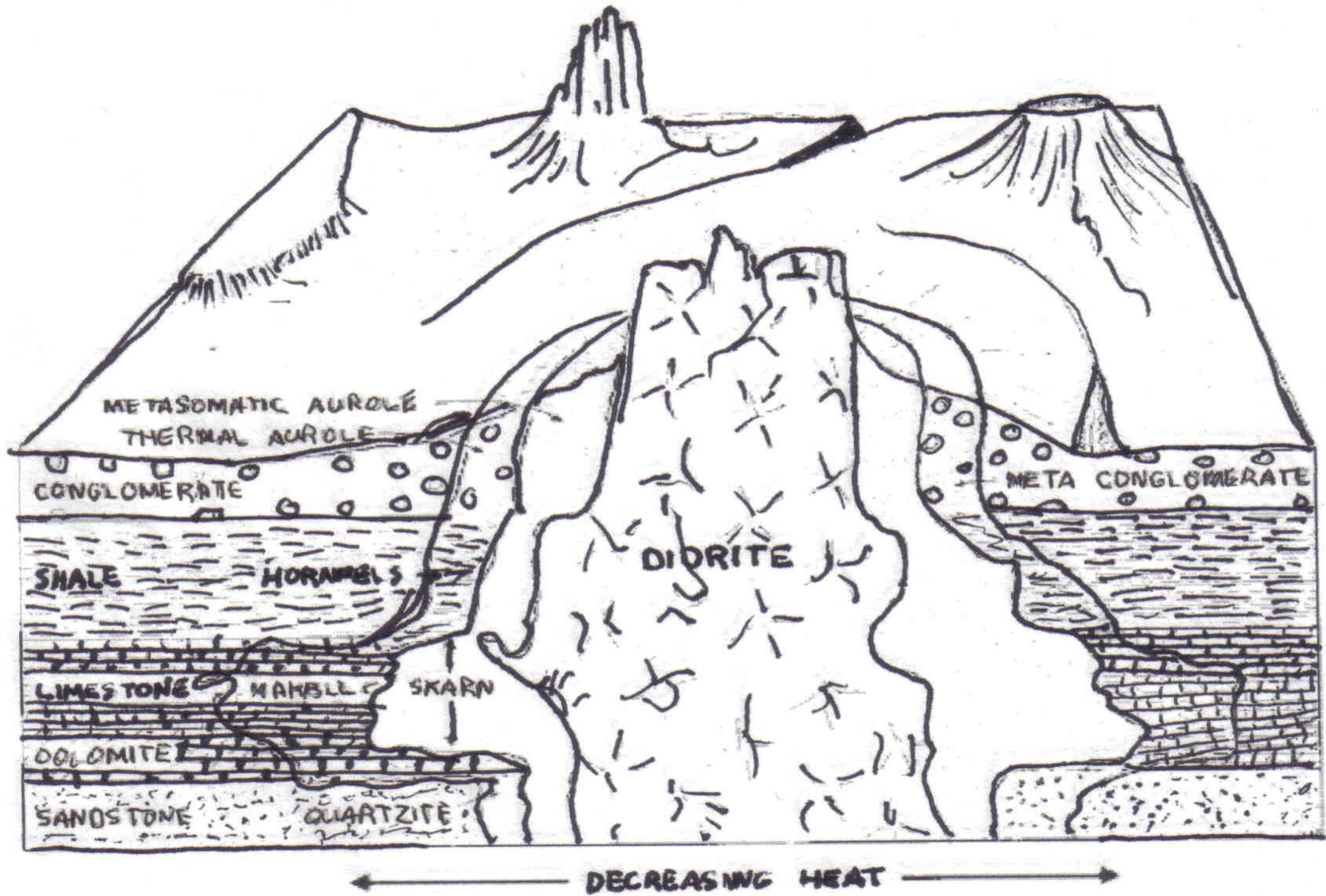
NAME:

WS Color STRATA Layers

DUE

PD:

DIRECTIONS: COLOR each strata accordingly.



NAME:

WS Color STRATA Layers

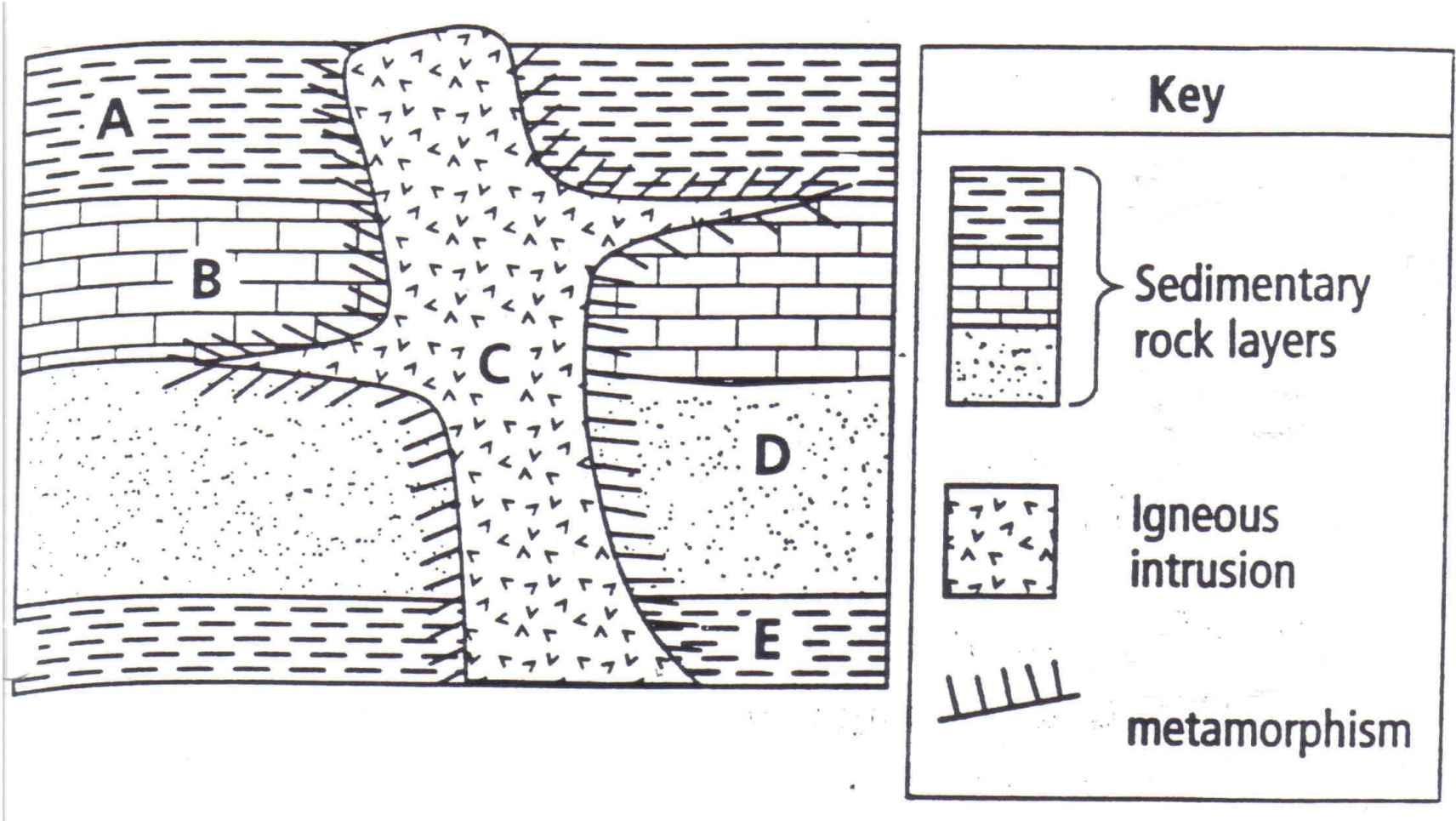
DUE

PD:

DIRECTIONS: Using the Law of Superposition.
Label the youngest to oldest rock layer.
COLOR each strata accordingly. MAKE sure you color the metamorphism area's proper rock and color. For example Limestone turns into Marble (white). Assume the rocks have not been overturned.

Youngest

Oldest



NAME:

WS Color STRATA Layers

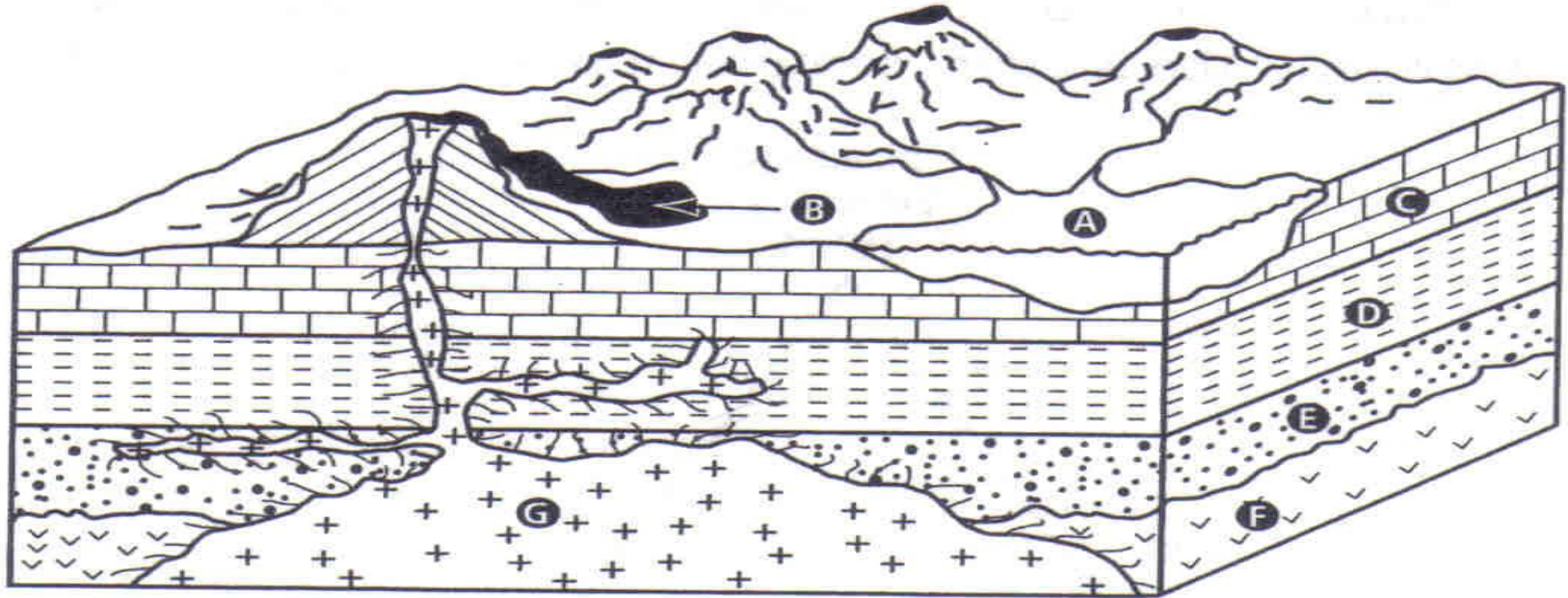
DUE

PD:

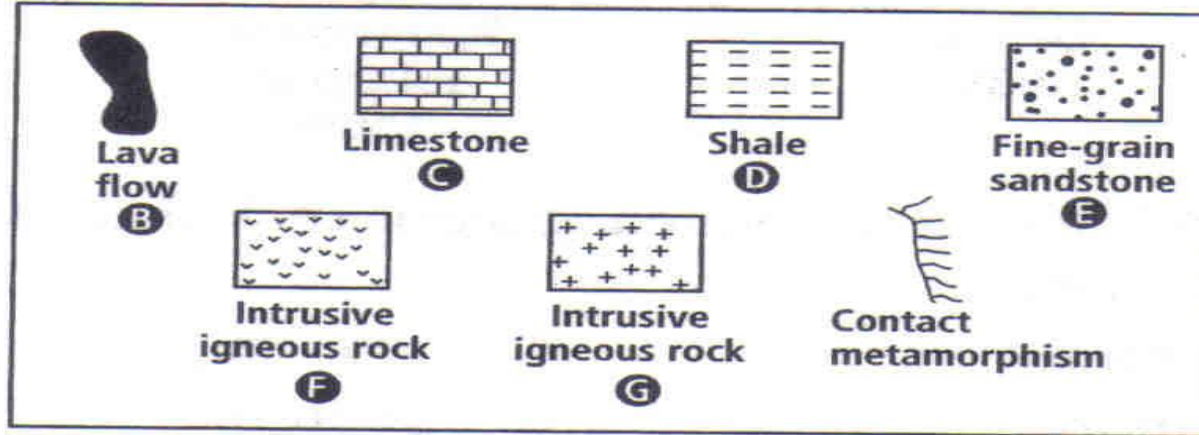
DIRECTIONS: Using the Law of Superposition. Label the youngest to oldest rock layer. COLOR each *strata and surface accordingly*. MAKE sure you color the metamorphism area's proper rock and color. For example Limestone turns into Marble (white). Assume the rocks have not been overturned.

Youngest

Oldest



KEY



NAME:

WS Color STRATA Layers

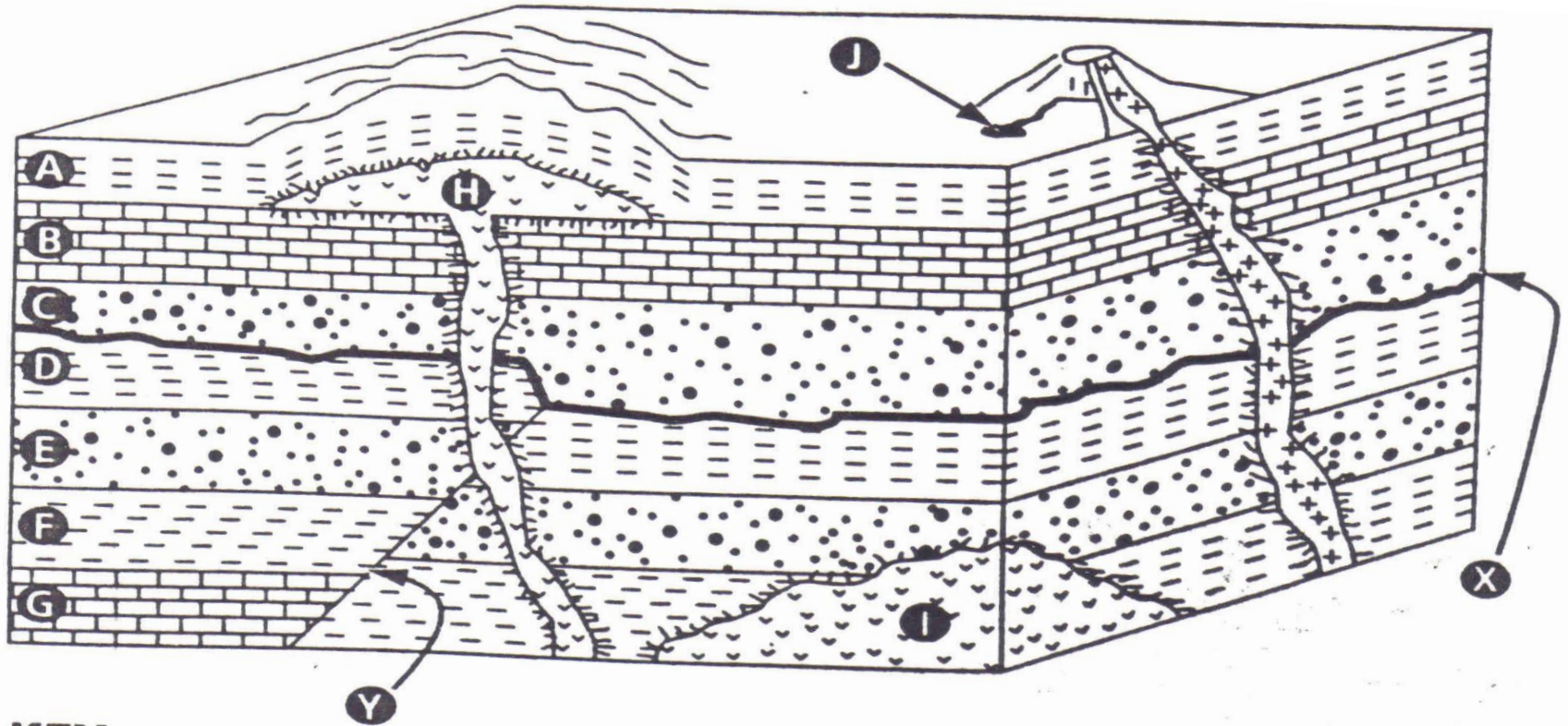
DUE

PD:

DIRECTIONS: Using the Law of Superposition. Label the youngest to oldest rock layer. COLOR each *strata* and *surface accordingly*. MAKE sure you color the metamorphism area's proper rock and color. For example Limestone turns into Marble (white). Assume the rocks have not been overturned.

Youngest

Oldest



KEY



Shale



Limestone



Sandstone



Igneous rock



Contact metamorphism